

Components List

Part Description	115 Volt 2200	115 Volt 4000	230 Volt 2700	230 Volt 4000
Blower, Condenser	29-4121-10	29-4121-10	29-4120-10	29-4120-10
Blower, Evaporator	29-4121-10	29-4121-10	29-4120-10	29-4120-10
Capacitor, Compressor	N/A	10-1032-13	10-1032-09	10-1032-14
Compressor	10-1016-23 SP	10-1016-26 SP	10-1026-74 SP	10-1026-77 SP
Thermal Overload, Compressor	10-1007-19	10-1007-45	10-1007-57	10-1007-51
Filter, Air, Reusable	10-1000-32	10-1000-32	10-1000-32	10-1000-32
Thermostat, SPST, 55-100F	10-1061-16	10-1061-16	10-1061-16	10-1061-16
Mounting Gasket Kit	29-4100-02	29-4100-02	29-4100-02	29-4100-02
Relay, Compressor	10-1028-20	10-1028-14	10-1028-07	10-1028-15
Power Cord	Consult factory	Consult factory	Consult factory	Consult factory

Parts List

Part	Description	Part No.
1	Condenser Coil	29-4101-00
2	Filter, drier, refrigerant	52-6028-00
3	Compressor	See Components List
4	Hot Gas bypass valve (CR29-04xx units only)	52-6027-11
5	Evaporator coil	29-4102-00
6	Inlet air filter, reusable aluminum	10-1000-32
7	Blower (115V) Blower (230V)	29-4121-10 29-4120-10
8	Compressor thermal overload switch	See Components List
9	Capacitor, compressor (CR29-04xx units only)	See Components List
10	Capacitor, compressor (CR29-0226 units only)	See Components List
11	Terminal block	086912
12	Power cord	Consult Factory
13	Temperature controller	Consult Factory
14	Relay, compressor (CR29-04xx units only)	See Components List
15	Relay, compressor (CR29-02xx units only)	See Components List
16	Mounting gasket kit	29-4100-02

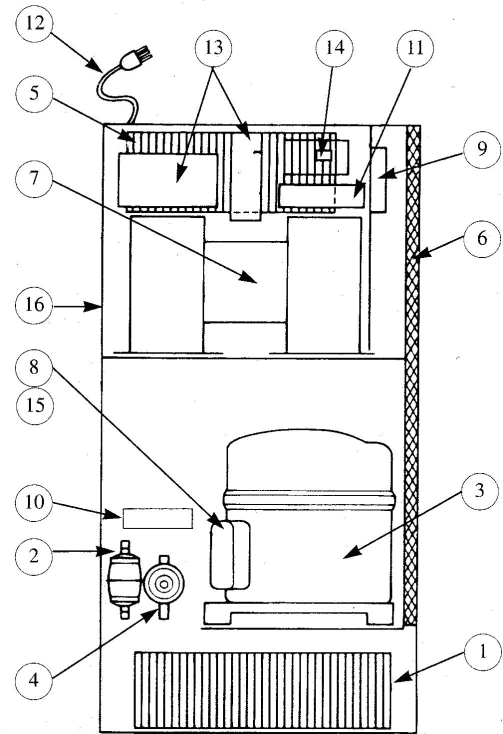
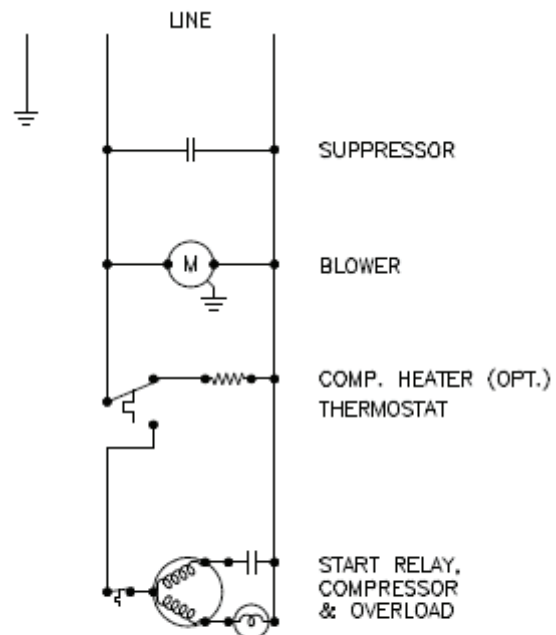
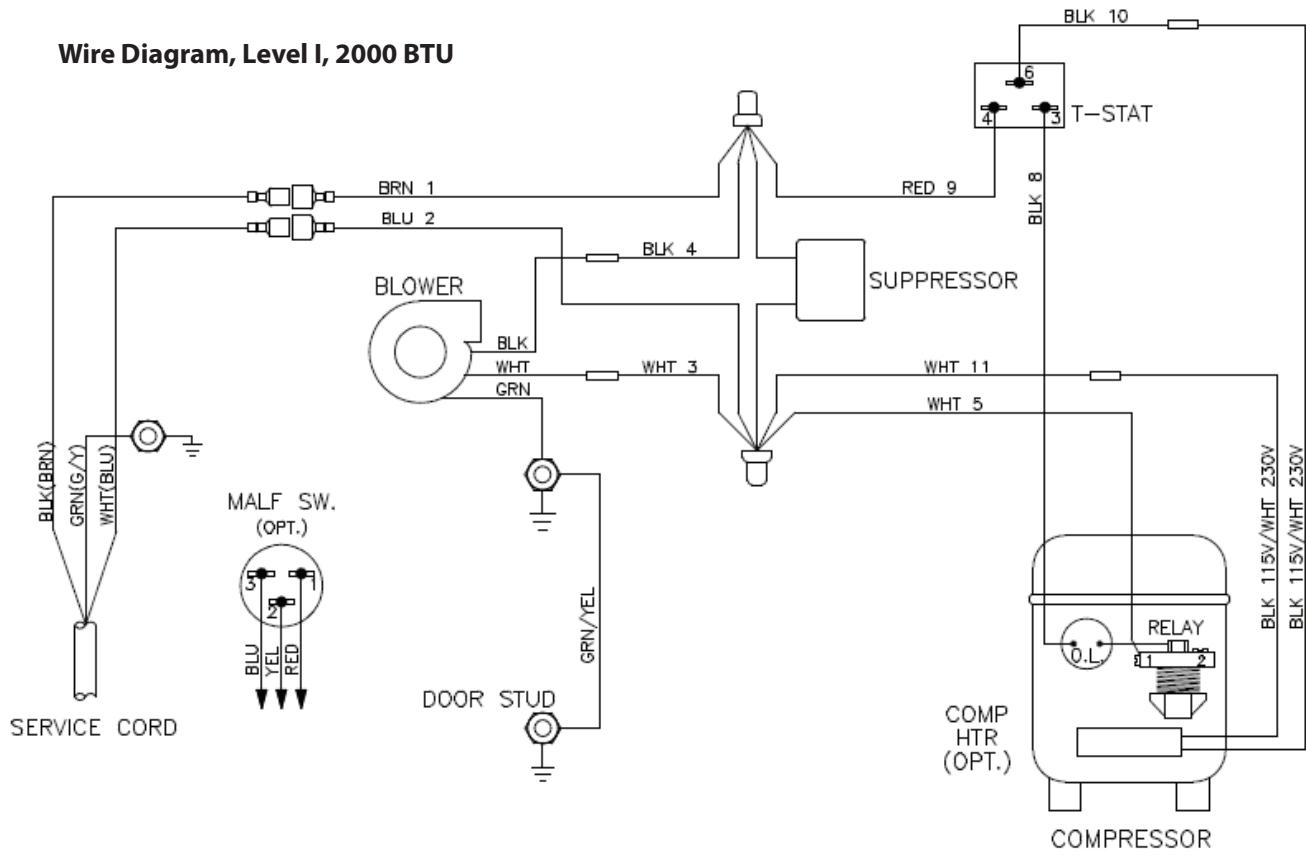


Figure 2

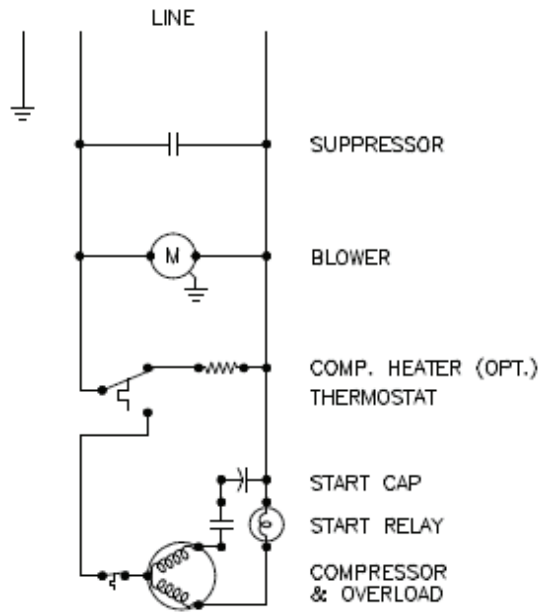
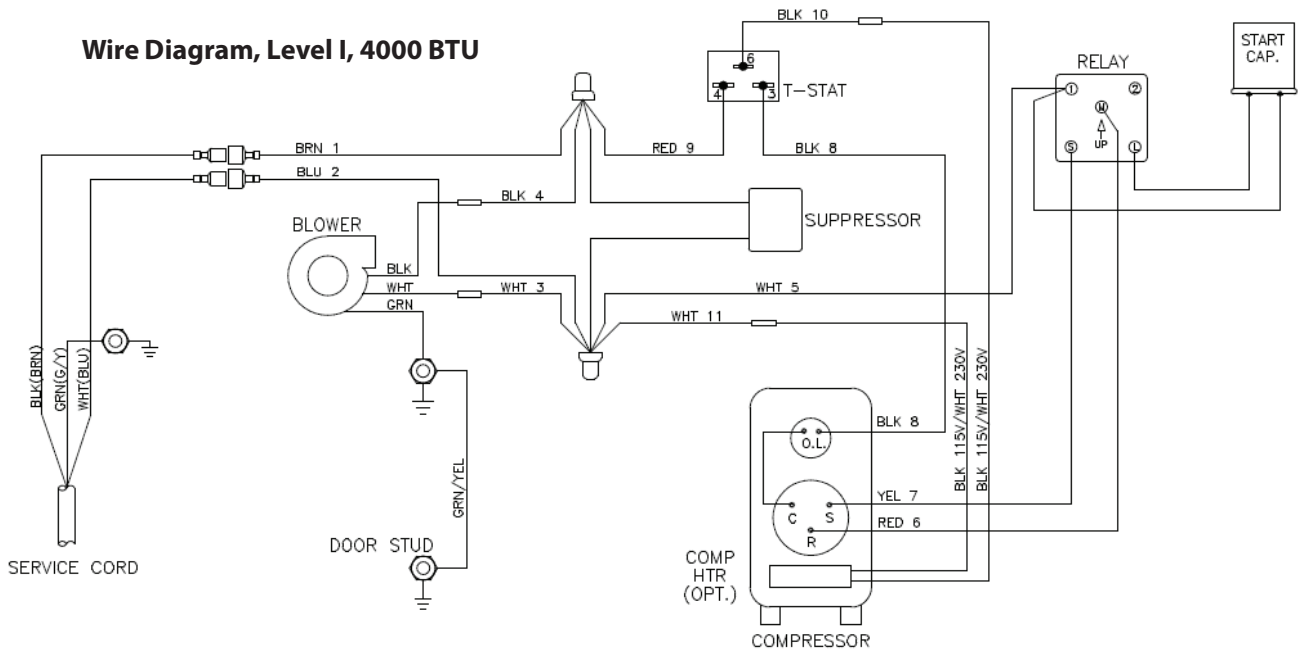
Wire Diagrams and schematics

Wire Diagram, Level I, 2000 BTU



ELECTRICAL SCHEMATIC

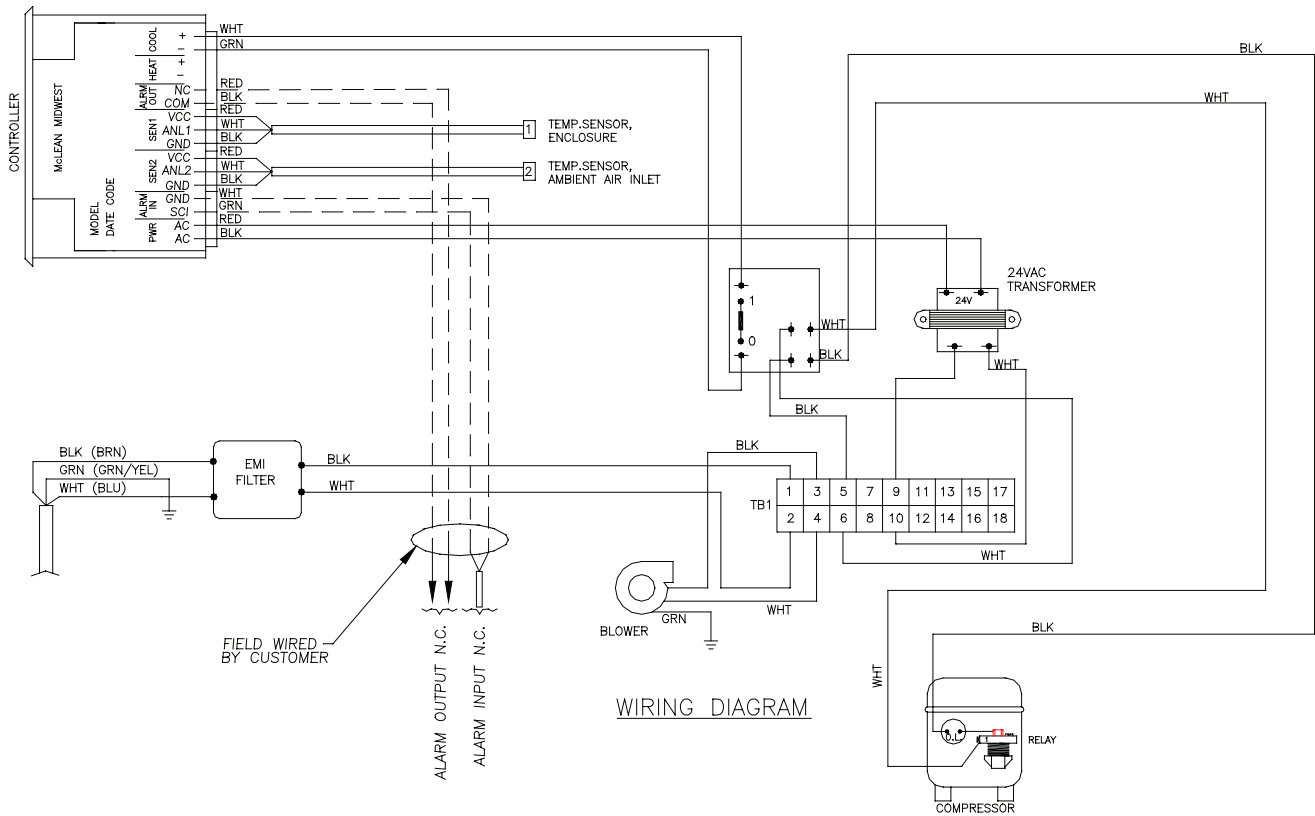
Wire Diagram, Level I, 4000 BTU



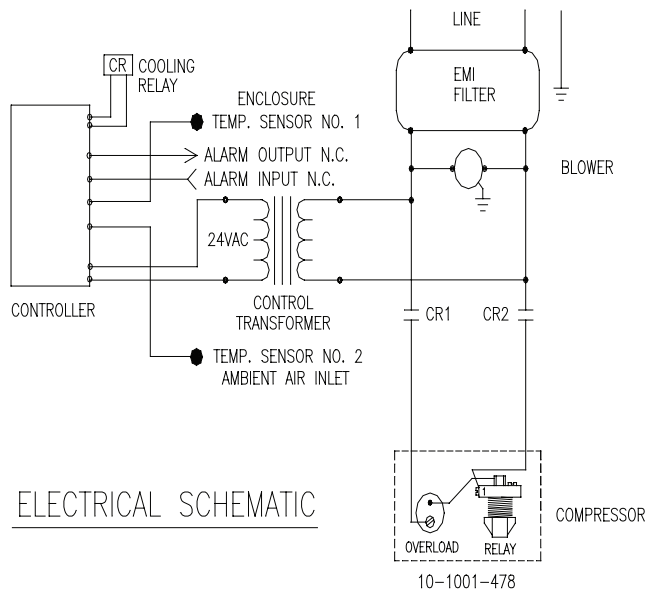
ELECTRICAL SCHEMATIC

NOTE: For voltage, hertz, and options not shown in this manual, refer to the wiring diagram attached to the unit.

Wire Diagram, Level II and III, 2000 BTU



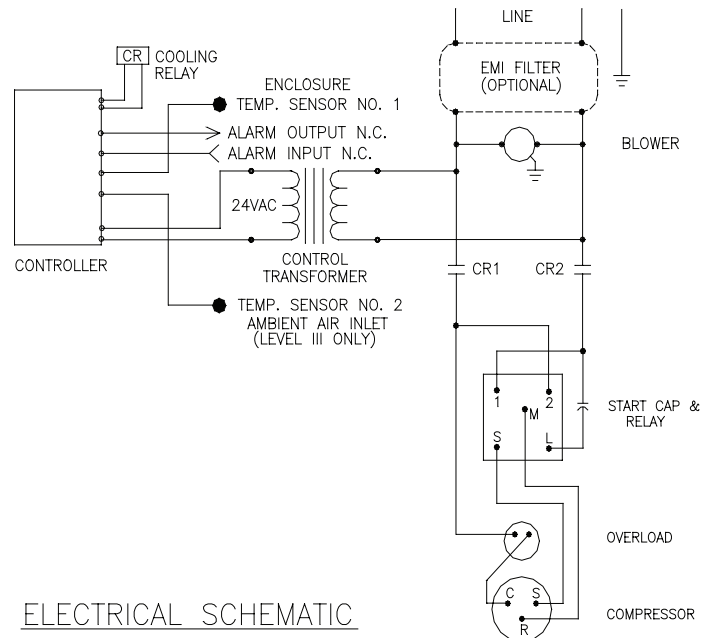
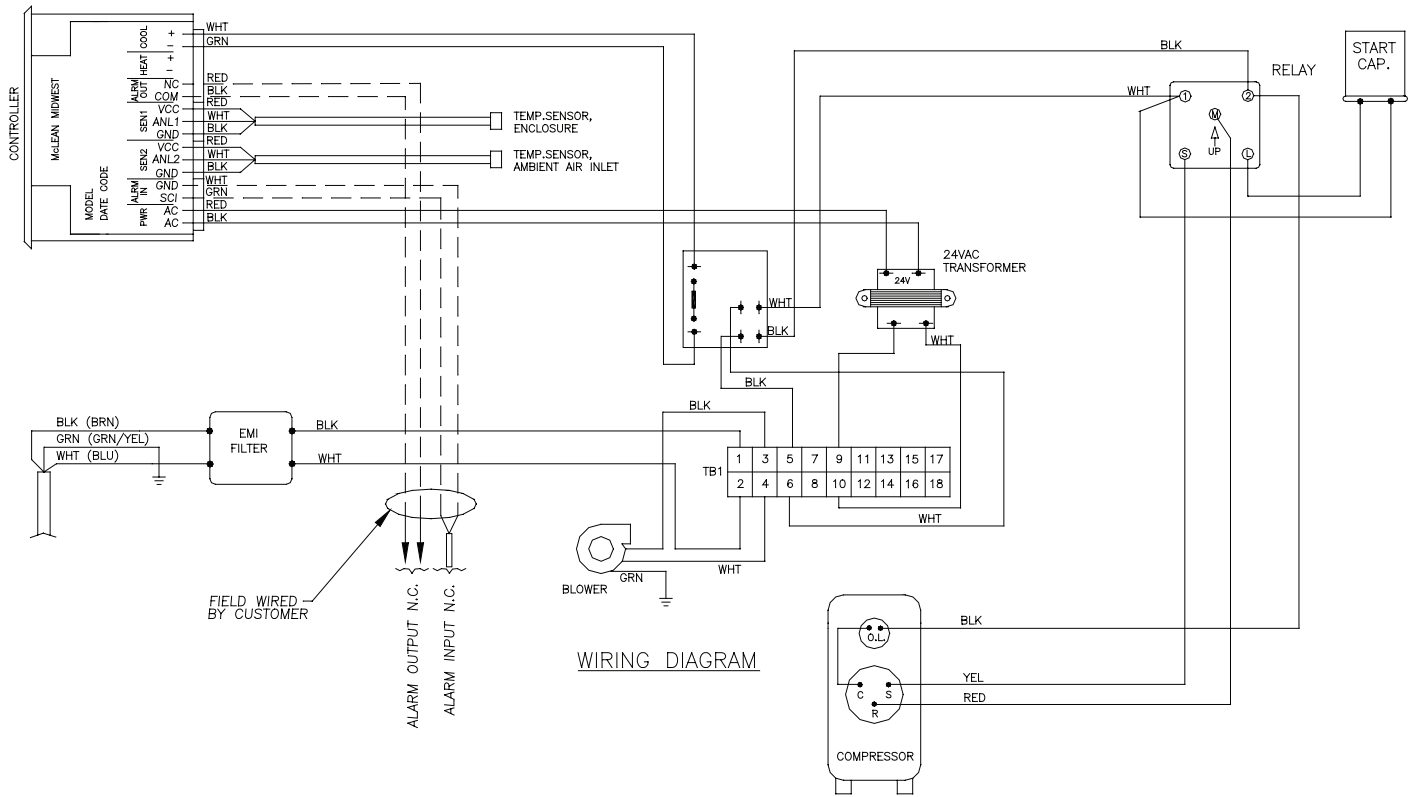
WIRING DIAGRAM



ELECTRICAL SCHEMATIC

10-1001-478

Wire Diagram, Level II and III, 4000 BTU



NOTE: For voltage, hertz, and options not shown in this manual, refer to the wiring diagram attached to the unit.